

2023 ANNUAL REPORT FOR ACTIVITIES IN RENFREW COUNTY FOREST

PREPARED BY L. ROSE, R.P.F., ON JANUARY 3, 2024

HARVEST

Timber sales for 2023 harvest activities were advertised in November 2022. Successful bids were received for three out of four sales. One bid was received for Ruby Tract (natural mixedwood) but was not accepted due to below-market pricing. In addition, revenue was incurred from three carry-over operations (Brudenell, Beachburg and Round Lake East). A summary is provided in Table 1.

Harvesting activities took place in almost all seasons of 2023, with the exception of spring melt and species at risk timing restrictions. A significant public outreach campaign proved worthwhile with no complaints or conflicts during harvest operations at Beachburg Tract, Renfrew County Forest's (RCF) most used forest.

Approximately 21 local residents were employed on the RCF in 2023¹, on tendered harvest operations, cutting and skidding or forwarding wood, building roads, processing timber on site, supervising operations, and hauling logs to mills.



Figure 1. Post-harvest canopy at Beachburg Tract

County of Renfrew staff completed all planning (timber cruising, analysis, prescription writing), layout, tree marking, tendering, wood measurement and operations monitoring activities. A Forestry Technician was hired in May, 2023, significantly improving the ability to complete all work in-house and catching up on backlogged activities.

Table 1. Summary of 2023 Harvest Activities in RCF

Tract (DPF)	Harvest Type and Details	Area (ha)	Volume (m3)	Revenue (\$)
Crow's Nest (01-23)	Red pine thinning.	8	542	\$18,427.32
Centennial Lake (02-23)	Red and white pine thinning.	56	4,156	\$112,533.62
Pershick (03-23)	Red pine and spruce thinning.	23	994	\$12,201.88
Brudenell (02-22)	Cedar and poplar. Carry-over from 2022, requires frozen conditions. Most revenue in 2022.	4	669	\$12,366.00 ²
Beachburg (03-22)	White pine shelterwood. Carry-over from 2022, but all revenue in 2023.	43	4,568	\$174,723.56 ³
Round Lake East (04-22)	Red pine thinning. Carry-over from 2022, but all revenue in 2023.	18	1,994	\$51,167.03
Total for 2023		152	12,923	381,419.41

¹ During active operations, employed by successful bidders.

² \$7,300 of this revenue was reported in 2022's AR, but not included as accrual by Finance. It is included in this table to align Forestry reporting with Finance reporting. The total revenue for this sale (2022-23) was \$29,652.10.

³ \$11,800 of this revenue was reported in 2022's AR, but not included as accrual by Finance. It is included in this table to align Forestry reporting with Finance reporting. The total revenue for this sale (2022-23) was \$174,723.56.

RENEWAL & MAINTENANCE

In 2023, a small number of trees were planted, invasive species control measures occurred, and progress was made towards renewing pine in the Beachburg Tract.

Table 2. Summary of 2023 Renewal and Maintenance Activities

Activity	Tract Name	# Unit	Cost (\$)
Planting of red and white pine seedlings in blow down area	Centennial Lake	1,000 seedlings	
Planting of butternut seedlings grown from seed of trees tolerant of butternut canker	Kennelly	30 seedlings	0
Garlic mustard control by hand-pulling	Centennial Lake	<0.1ha	In-house
Wild parsnip control with herbicide	Ruby, Kennelly, Pershick	<1ha	\$1,966.20 (excludes HST)
Locust control with brushsaw	Pershick, Centennial Lake	<0.5ha	In-house
Beech regeneration control with brushsaw	Ruby	1ha	In-house
Mechanical site preparation	Beachburg	24ha	\$13,737.50 (excludes HST)

EDUCATION & OUTREACH

Opportunities are taken to positively promote sustainable forest management that occurs on RCF, as well as in Renfrew County as a whole, when staff time permits.

- Staff were interviewed as part of the [“Canadian Forestry Can Save the World”](#) podcast series, and [The Mass Timber Today](#) Podcast.
- Local outreach activities included:
 - o Two classroom visits (grade 7 and 9)
 - o A career fair (World of Choices for grades 8-12)
 - o A forestry session at Shaw Woods Outdoor Education Centre
 - o A harvest operation and mill tour to high school students from Petawawa, in partnership with the Petawawa Research Forest and Shaw Lumber, funded by Forests Ontario
- Post-harvest tours of the Beachburg Tract were given to 45 students from Opeongo High School, 35 Algonquin College Forestry Technician students, 25 members of the public, the SFI Central Canada Implementation Committee.



Figure 2. Algonquin College students visit harvest operations in RCF.

OTHER

Several RCF Tracts were surveyed for ice storm damage following April’s ice storm. Although there was some damage, it was not enough in any one location to warrant salvaging. Trees on edges and in more open areas tended to be most affected.

Issues related to public use of RCF are on the rise: dumping and encroachment issues occupied significant staff time in 2023, in collaboration with law enforcement officers.

Feedback was sent to the Ministry of Environment, Conservation and Parks in response to draft protection measures for Black Ash, which has been designated as Endangered under the Endangered Species Act (2007). This followed a number of previous comment submissions by the County.

One well was filled at Petznick Lake Tract. Old wells associated with homestead areas are filled on an ongoing basis as they are discovered and become accessible through improved access created by forest management activities.

Renfrew County Forest (RCF) participated in a successful Forest Stewardship Council (FSC) and, for the first time, Sustainable Forest Initiative (SFI) audit in November.

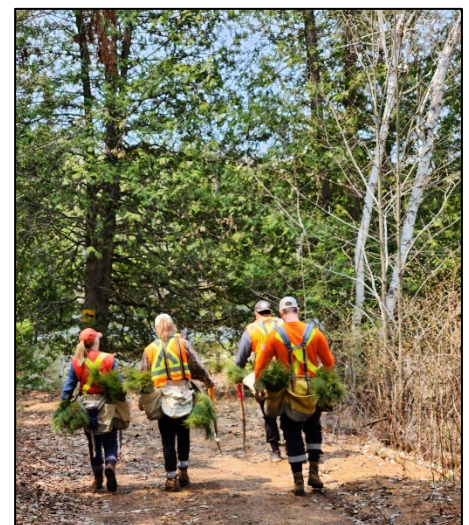


Figure 3. Development & Property staff planting trees at Centennial Lake