

Upcoming Forest Management at Beachburg Tract of the Renfrew County Forest

Frequenterers of the Beachburg Tract may have noticed paint on trees in some of the white pine forest. This is in preparation for a harvest planned for 2022. The tree marking was carried out by a certified tree marker, in accordance with a Forest Operation Prescription prepared by a Registered Professional Forester. The goal of the prescription is to create conditions that will help regenerate the future forest, while protecting wildlife and recreational values.

Some may be surprised to note that much of the area scheduled for management was partially harvested in 1993. At that time, the area was left to naturally regenerate and unfortunately very little red or white pine has established in the understory. The area marked “Area B” on the map now will receive a do-over “Seeding Cut”, where the canopy is re-opened to allow 40-60% light through. This amount of light is where white pine thrives, and has the best chance of winning against competing species that require full sun, like poplar. Most of the trees retained will be pine, along with other scattered species for wildlife and diversity value. This site is very well suited to pine, and we want to make sure that this forest type is maintained on the landscape. Historically, pine is a fire-dependant species. This means it regenerates best after a fire disturbance kills off its competitors and creates an optimal seed bed. However, in an environment with human settlement and fire suppression, forest management attempts to emulate natural disturbance caused by fire.

In the years following harvest, the County of Renfrew will invest in artificial regeneration treatments in Area B to ensure pine grows back by completing:

- Mechanical and/or chemical site preparation to create more plantable spaces, encourage natural regeneration of pine by exposing mineral soil, and control competing species that quickly establish after a disturbance, like red maple, poplar and raspberry;
- Planting white and red pine to make sure, even if cone crops are unreliable, that the future forest will continue to be dominated by pine, and;
- Follow-up tending (mechanical and/or chemical), if necessary, to ensure pine are not overtopped by competing species.

Area A will receive a “Preparatory Cut”, with the goal of giving the best overstory pine trees more room to grow big, healthy crowns to “prepare” to be seed producers at the next stage of harvest, the “Seeding Cut”. No regeneration treatments will occur in this area until after the next stage of harvest.

Once the pine understory has been successfully established and is well on its way to success (>6m tall), most of the overstory will be removed to make room for the next generation. Veterans will be retained, but as we have seen with recent mortality and blowdown – trees don’t live forever.



Figure 3. Example of a Seeding Cut, after mechanical site preparation.



Figure 1. Trees are marked orange for harvest.



Figure 2. Trees are marked blue for wildlife value.

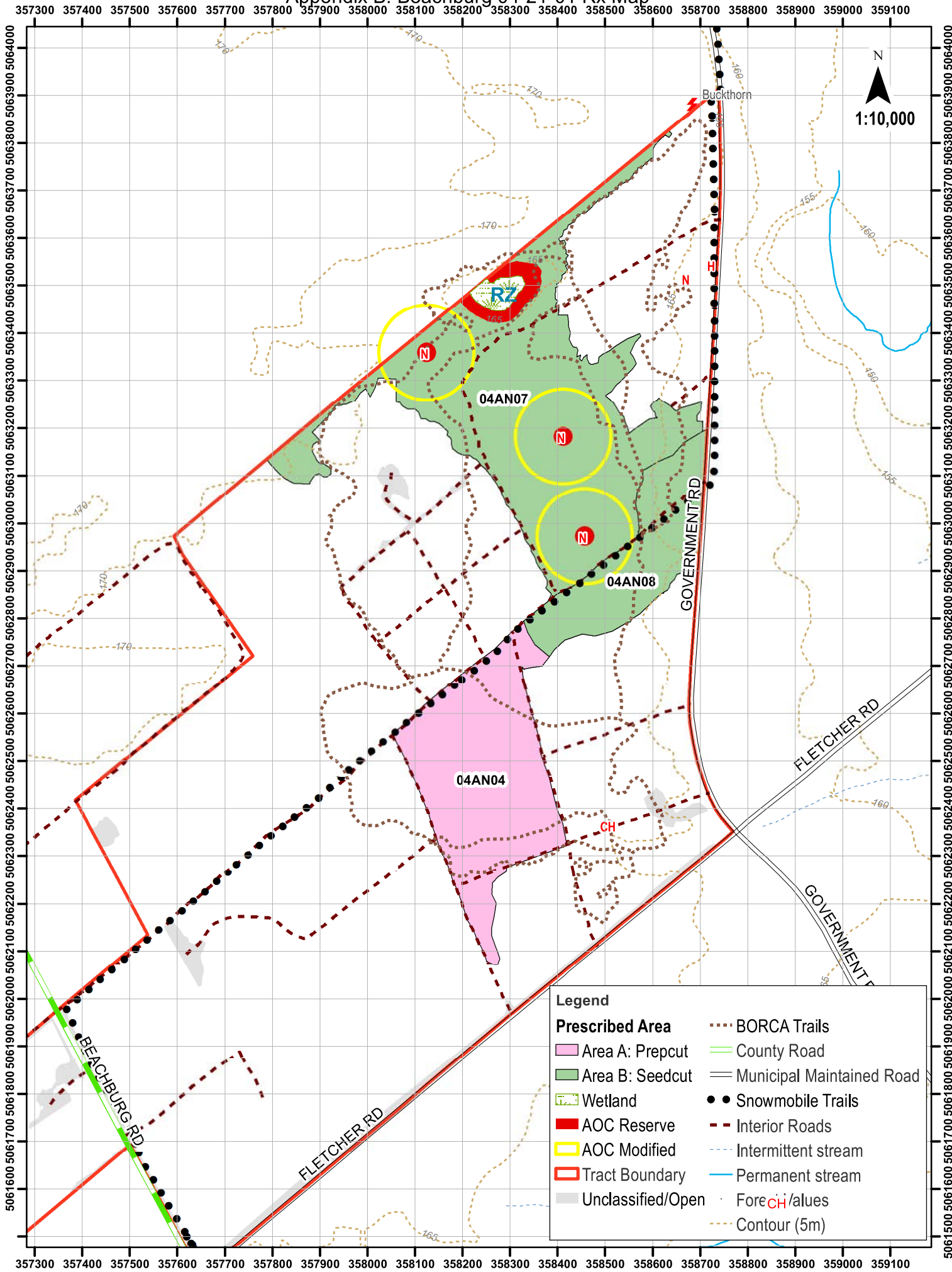
Of course, there will be temporary disruption to trail use during harvest and regeneration treatments. This work is necessary to ensure that future forest users – human and wild! – will be able to enjoy a beautiful pine forest like we do today. As we have in the past, we will work with the wonderful folks at BORCA and Snow Country to ensure the disruption is as minimal as possible. We hope you will enjoy seeing the future forest develop as we complete our work!

Please direct any questions to County Forester, Lacey Rose, at rose@countyofrenfrew.on.ca.

Find out more about sustainable forest management in Renfrew County Forests here:

<https://www.countyofrenfrew.on.ca/en/living-here/forests.aspx>

Appendix B: Beachburg 04-21-01 Rx Map



Legend	
Prescribed Area	--- BORCA Trails
Area A: Prepcut	— County Road
Area B: Seedcut	— Municipal Maintained Road
Wetland	●● Snowmobile Trails
AOC Reserve	- - - Interior Roads
AOC Modified	- - - Intermittent stream
Tract Boundary	— Permanent stream
Unclassified/Open	●● ForeCH/aluves
	- - - Contour (5m)