

COUNTY OF RENFREW OFFICIAL PLAN SCHEDULE "A"

Township of Whitewater Region Enlargement April 15, 2022

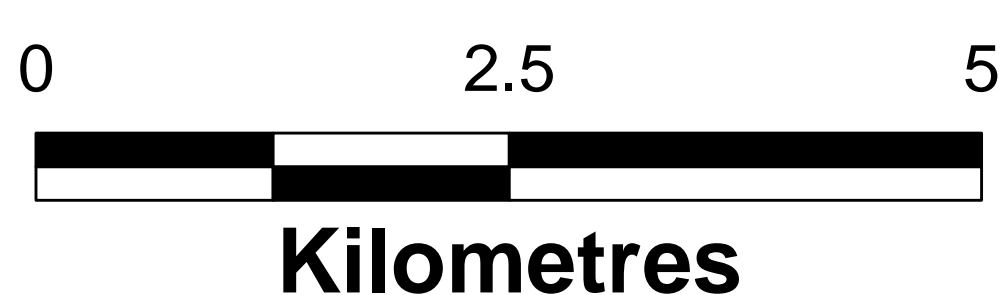
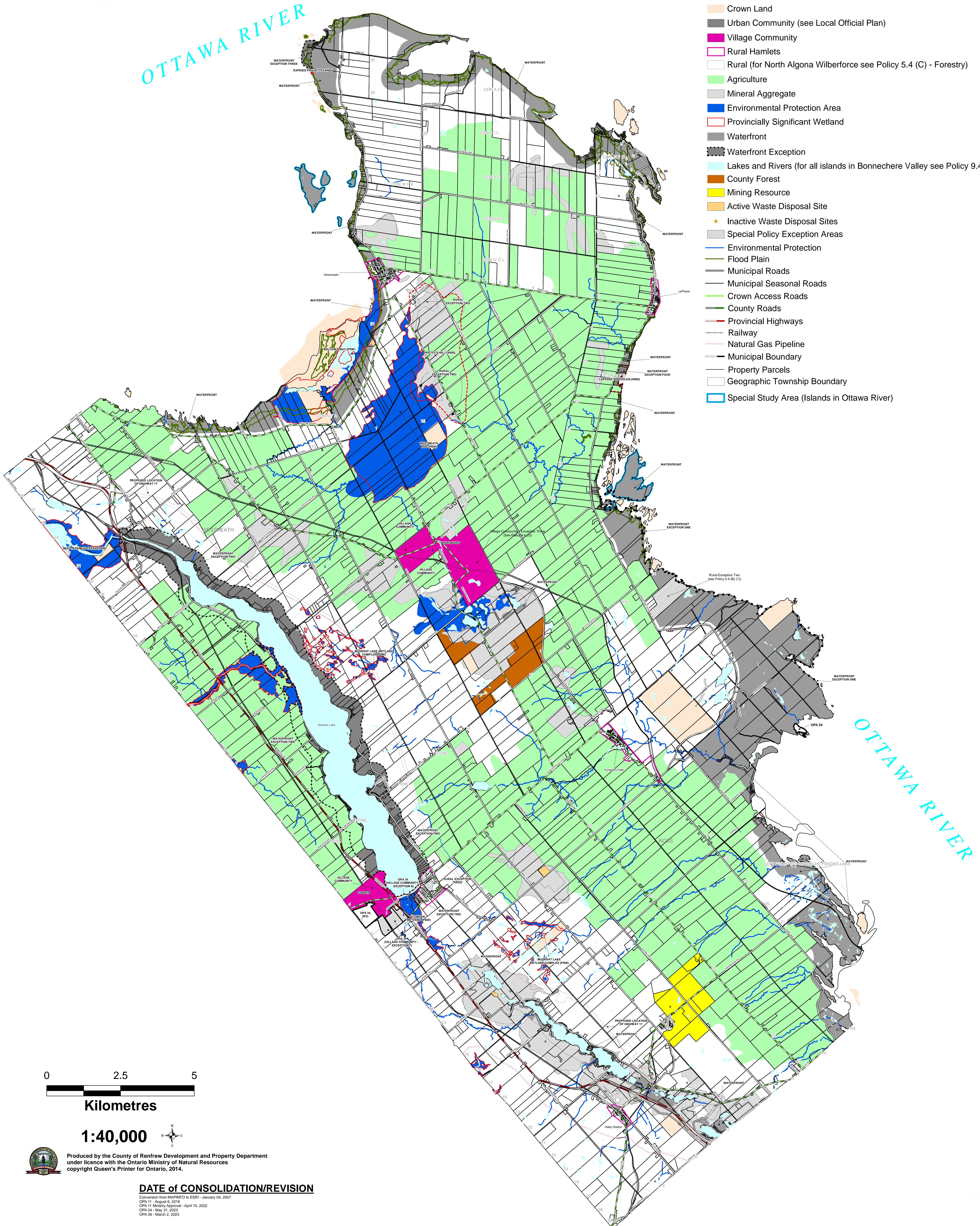
This Amendment was adopted by the Council of the Corporation of the County of Renfrew by By-law in accordance with Sections 17 and 21 of The Planning Act on the 27th day of August, 2014.

[Signature]
WARDEN

[Signature]
CAO/CLERK

LEGEND

- Non County Areas
- Crown Land
- Urban Community (see Local Official Plan)
- Village Community
- Rural Hamlets
- Rural (for North Algona Wilberforce see Policy 5.4 (C) - Forestry)
- Agriculture
- Mineral Aggregate
- Environmental Protection Area
- Provincially Significant Wetland
- Waterfront
- Waterfront Exception
- Lakes and Rivers (for all islands in Bonnechere Valley see Policy 9.4 (2))
- County Forest
- Mining Resource
- Active Waste Disposal Site
- Inactive Waste Disposal Sites
- Special Policy Exception Areas
- Environmental Protection
- Flood Plain
- Municipal Roads
- Municipal Seasonal Roads
- Crown Access Roads
- County Roads
- Provincial Highways
- Railway
- Natural Gas Pipeline
- Municipal Boundary
- Property Parcels
- Geographic Township Boundary
- Special Study Area (Islands in Ottawa River)



1:40,000



Produced by the County of Renfrew Development and Property Department
under licence with the Ontario Ministry of Natural Resources
copyright Queen's Printer for Ontario, 2014.

DATE of CONSOLIDATION/REVISION

Conversion from MAP96/0 to EDR - January 04, 2007
OPA 11 - August 6, 2019
OPA 11 Ministry Approval - April 15, 2022
OPA 34 - May 31, 2022
OPA 39 - March 2, 2023